



NEWSLETTER

Gooden Drive, Baulkham Hills, Telephone: (02) 9624 3133 Facsimile: (02) 9838 8407
Email: modelfarms-h.school@det.nsw.edu.au

6th March 2020

TERM 1 – WEEK 6

FROM THE PRINCIPAL

Open Night

I would like to thank all of the students, staff and parents who were involved in the delivery of our Open Evening on Tuesday night. This is a very important event, where we showcase our school to the community. Everything visitors see, hear and read reflects upon Model Farms High School and all involved on the evening were wonderful ambassadors for the school. I thank you for your commitment to the school and for the way you positively conducted yourself, representing everything that is great about Model Farms.

Student Success

Congratulations to all of our swimmers who represented Model Farms at the Hills Zone Swimming Carnival last week. Your participation, effort and teamwork allowed our school to finish in third position. A special mention to the following age champions on their outstanding performances.

Girls:

12 Yrs - Celine Voon

14 Yrs - Melica Rohani

18 Yrs - Zoe Ross

Boys:

17 Yrs – Jack Maguire



Throughout the first part of the term, Model Farms High School students have trialed for the Opens Sydney West Hockey teams. Congratulations to Kayla Robson, Josh Robson, Esther Heffernan and Jared Findley on making the Open Boys and Open Girls teams respectively. This is an outstanding achievement for students in Years 7 and 8 and we wish them well in their upcoming State Championships at Kurnell and Lismore.



Parental Support

I have been informed via a local community Facebook group that last week around 6pm in Baulkham Hills, a 12 year old boy was approached by a large male in a white 4WD vehicle wearing sunglasses, a black and yellow cap and gloves. The male grabbed the boys arm and the boy was able to quickly remove himself from the situation and run home. Police have been informed and attended to take statements.

Could I ask that all parents remind their children of stranger danger and the need to be wary and cautious at all times. As a school, we will be reminding our students through our coming assemblies. At Model Farms, we have many staff to assist should your child be overly concerned. Please feel welcome to contact your child's Year Adviser should that be the case.

Student Leaders

Congratulations to all of our students recognised in Week 4 as part of our Leadership Induction Ceremony and thank you to the parents and caregivers who were able to attend. The ceremony inaugurated our Year 11 Prefects, House Captains and SRC Members and was overseen by our Year 12 student leaders. We look forward to this excellent cohort demonstrating that

leadership is about service to others and leaving a footprint of positivity and continual improvement.



Road Safety

Following a discussion at our recent P and C Meeting, I have provided below the messages that we continually reinforce regarding road and pedestrian safety. In the interests of keeping your children and our student's safe, please take a moment to discuss these with your child.

Before you cross the road:

- Look before you cross. Just because someone else decides to cross, doesn't mean it's safe for you
- Unplug your earphones and put away your phone to ensure you are aware of your surrounds
- Never assume that an approaching vehicle can see you, or will stop for you – wait until all vehicles have stopped before you step off the kerb
- Avoid crossing between parked cars or at the front or back of buses and large vehicles
- At intersections, check for turning vehicles before you leave the kerb, and while you are crossing the road

COVID-19 (Formerly referred to as Novel Coronavirus)

The NSW Department of Education is working closely with the NSW Ministry of Health in response to the unfolding international COVID-19 (formerly referred to as Novel Coronavirus) situation.

Further travel restriction

Effective 1 March 2020 the Federal Government has issued a travel ban on foreigners coming to Australia from Iran. Only Australian citizens and permanent residents coming from Iran will be allowed entry to Australia, and from 1 March they are required to self-isolate for a period of 14 days after departing Iran consistent with the restrictions for those entering from China. Additionally, Australians have been advised NOT to travel to Iran.

Updated advice from the NSW Government for parents and affected staff regarding COVID -19 is:

- Any student or staff member who has been in, or transited through, mainland China (not just Hubei province) or has been in Iran is excluded from work, school or child care services for 14 days from the date they left mainland China or Iran (as the COVID-19 incubation period can be as long as two weeks).
- Any confirmed case of COVID-19 will be excluded until they are medically cleared to return.
- Close contacts of a confirmed case of COVID-19 will be excluded for 14 days since last contact with the confirmed case.
- Students and staff who have returned to Australia from mainland China or Iran more than 14 days ago and have shown no symptoms are able to return to school.

The NSW Ministry of Health has processes to identify any close contacts of cases confirmed in Australia. Advice about not attending school would be provided to these close contacts by the NSW Ministry of Health.

Consistent with current guidelines, students who are unwell with respiratory illness should remain at home until symptoms resolve. In accordance with the NSW Department of Education's current practice, if any student becomes unwell, the school will implement infection control guidelines and follow the advice provided by the NSW Ministry of Health as appropriate.

Maintaining good hygiene standards is an important way to reduce the risk of acquiring and spreading respiratory infections. Parents and caregivers are asked to promote good hygiene, including handwashing with soap as handwashing is the single most effective way to reduce the spread of germs that cause respiratory disease.

The NSW Department of Education will continue monitoring the COVID-19 situation and provide parents and caregivers with updated information about the virus.

Best wishes for the week ahead,

Mark Grady
Principal

FROM THE DEPUTY PRINCIPAL – MS PLEDGER

Year 7

Students have had a great start to the year so far as we welcome our new Year 7 group to the school. Going from the biggest kids in their primary school to the smallest again at Model Farms has been a bit of a shock, but it wore off quickly. Year 7 has been working with their Year 10 Peer Leaders to feel more comfortable with the school, each other and the older students which has been very successful.

Year 7 are off to camp this week, where they will have a great range of opportunities to bond as a year group in an exciting range of activities

Year 11 In Contact Evening

On Monday 24th February Model Farms held our Year 11 In Contact Evening. During the evening we discussed how students and parents can effectively meet and overcome some of the challenges presented in the senior years. The presentation included aspects related to the study area, sleep, diet, relationships, leading a balanced life and above all, although the HSC is an important accomplishment, it is not the be all and end all. Copies of the presentations can be found on our school website.

Mobile Phones

Below I have included an extract from our Mobile Phone Policy. As with all school policies it has been endorsed by MFHS School Council.

Model Farms High School recognises that many parents wish their son or daughter to carry a mobile phone. If a student brings a phone to school he/she must ensure the mobile phone is TURNED OFF (at all times) and NOT USED during school time, including lunch and recess.

Unauthorised usage of electronic devices is not permitted for any purpose, including video and audio recording.

The school takes no responsibility for the security of mobile phones. They are brought to school at the owner's risk.

If parents need to contact students they are to phone the school on 9624 3133. Students must not use their phone to contact parents during school hours. In, an emergency students, can gain access to a phone by asking a member of staff.

We ask for your co-operation with this policy. If your child contacts you directly about being sick at school please tell them to do the right thing and go to see their teacher about going to sick bay. The front office will then assess the situation and contact parents if the student needs to go home.

Far too often we have parents turning up at school to collect their child because the student has contacted their parent's directly. This causes major confusion for the front office.



Come Prepared

All students are expected to come prepared for school in all subjects, both theory and practical. The expectations include:

All students have all writing implements, exercise books, textbooks and subject specific items e.g. calculator, dictionary for every lesson for each day. Students also need their netbook or computer device charged.

All students bring the necessary equipment and clothing for practical lessons, including PE and sport. To be appropriately equipped students need a suitable school bag in preparation for a full day's work.

Have a wonderful week,

**Jennifer Pledger
Deputy Principal**

FROM THE DEPUTY PRINCIPAL – MS KENNON

It is always refreshing to receive positive feedback from community members. I know what wonderful students we have at Model Farms, but when this is recognised by the community it makes it very special. This week was Open Night for Year 5 & 6 students. The school was on display. I spoke to many visitors and prospective students and their families and every one of them mentioned to me how impressed they were with the students in attendance. This included our wonderful captains who conducted the assembly, the outstanding school leaders and prefects who guided and directed families around the school, the students who volunteered to present musical, drama and dance performances, students who served food and drinks in the hospitality rooms and all the other students who helped in the classroom displays. Each of you are a credit to your families and the school and I congratulate you and thank you for than manner in which you conducted yourselves.

Tell Them From Me Survey

Over the next few weeks students will be undertaking the 'Tell Them from Me' survey. We have conducted this survey every year as it gathers data from students about the things that matter to them in their daily school life. We are able to use this data to inform our future planning. The survey will take place during school time and will take approximately 30 minutes. An information letter is included in this newsletter. If you DO NOT want your child to participate in the survey please complete the opt out note.

Year 12 – Driving to school

Gaining your drivers' license is an exciting time. However, it comes with great responsibility. It has been reported to me by students, and I have seen for myself, that some students are not taking this responsibility seriously and their driving behaviour is very unsafe. I will be contacting individual parents regarding this behaviour. PLEASE stress to your child the importance of driving safely to school and when leaving school of an afternoon. It is essential that driving is very careful around school zones to ensure the safety of all students. Students who drive a car to school should have returned the "Permission to Travel to and from School by Private Vehicle". A copy of this form can be obtained from the front office.

Upcoming events

Year 12 should have received their Interim reports and Years 8 and 10 reports will be emailed over the next few weeks.

Year 12 Parent teacher evening will be held on March 23rd.

**Have a great week,
Mrs Kerrie Kennon**



**Tell Them *From Me* student survey:
Information and consent form for
parents and carers**

Dear Parents and Carers

In Term 1 2020, our school is taking part in the *Tell Them From Me* student survey. The survey will provide us with valuable feedback on what our students think about school life, how engaged they are with school and the different ways that teachers interact with them. Schools in Australia and around the world have used the *Tell Them From Me* survey to help them improve. The survey is completed online and is run by an independent research company, **The Learning Bar**, which specialises in school-based surveys.

Staff in schools will **not** be able to identify individual students from their responses. To ensure confidentiality, participating students will receive a unique username and password. Where fewer than five students respond to a question, the results will be suppressed. The survey typically takes 30 minutes or less to complete and will be administered by the school during normal school hours. Once the surveys are completed by students, reports are prepared and in most cases are available to schools within three business days.

As well as schools getting student feedback, the Department of Education, through the Centre for Education Statistics and Evaluation (CESE), has access to data from across NSW and is running a research project to look at state-wide patterns of student wellbeing, engagement and effective teaching practices. The research is looking at how these things impact on student outcomes, including academic performance. Individual students will **not** be identified in any CESE publications, and all information will be handled in accordance with the relevant privacy legislation. Students' personal information will not be disclosed by the department to any other person or body other than as required by law.

This research will help schools in New South Wales to better understand how to improve student wellbeing and engagement. It will also help teachers and principals discuss what works to improve student outcomes.

Participating in the survey is entirely voluntary. Your child will not take part if either you or your child do not wish. If, during the survey, your child is uncomfortable, he/she can choose to stop the survey at any time. The majority of questions in the survey can be skipped.

If you **do not want your child to take part** in the survey, please complete the attached form and return it to the school by Friday 13th March 2020

More information about the survey and the research is available in English on the CESE website: <http://surveys.cese.nsw.gov.au/information-for-parents>

Mark Grady
Principal
Model Farms High School

Dr Jenny Donovan
Executive Director
Centre for Education Statistics and Evaluation

Tell Them ~~From~~ Me Student Feedback Survey non-consent form

If you **do not want** your child to participate in the student feedback survey, please sign this form and return it to the school by **Friday 13th March 2020**

I **DO NOT** give consent for my child/children to participate in the *Tell Them ~~From~~ Me* student feedback survey.

Name of student 1

Roll class of student 1

.....

.....

Name of student 2

Roll class of student 2

.....

.....

Name of student 3

Roll class of student 3

.....

.....

Name of student 4

Roll class of student 4

.....

.....

Name of parent/carer

Signature of parent/carer

Date

CENTRE FOR EDUCATION STATISTICS AND EVALUATION

E cese@det.nsw.edu.au

www.cese.nsw.gov.au

TERM 1**Week 7**

Monday 9 th March	Leadership Camp Yr 7 Camp Yr 9 PDHPE Assessment due Visual Art artXPress
Tuesday 10 th March	Leadership Camp Yr 7 Camp Knockout Volleyball Game 2:00pm
Wednesday 11 th March	Leadership Camp Yr 7 Camp Yr 8 History Topic Test on Medieval Europe
Thursday 12 th March	Yr 9 English Narrative Yr 10 Maths Class Task Yr 10 Drama Group Performance and Logbook Yr 10 Japanese – Task 1 Yr 8 History Topic Test on Medieval Europe Yr 12 PDHPE Core 1 Task due Davidson Shield v James Ruse
Friday 13 th March	Yr 12 Investigating Science Practical Examination

Week 8

Monday 16 th March	Yr 7 Maths Class Task Yr 11 Music Composition Task Yr 12 Ancient History – Historical Period Essay Yr 10 Food Technology Task 1 Yr 8 Japanese 2 – Task 1 Yr 8 FRE1 Listening and Reading Tasks Yr 12 Dance, Core Composition Yr 11: Exploring Early Childhood Task 1
Tuesday 17 th March	Yr 7 Maths Class Task 12SACA; Cont and Change Essay Music Encore Excursion Yr 8 Japanese 1 – Task 1 Yr 8 Japanese 3 – Task 1 Yr 8FRE2 and 8FR3 Listening and Reading Tasks Yr 9 Dance, Composition Space Yr 7V History Task 1 Yr 11EES; Practical and Skills Test
Wednesday 18 th March	Yr 7 Maths Class Task Yr 10 Dance Performance
Thursday 19 th March	Yr 7 Maths Class Task Yr 12 Legal Studies Court Visit Yr 8 Maths Class Task Yr 9 Japanese – Task 1 Yr 12 Economics In Class stimulus based essay Yr 7D, I, S, C, O, V, E, R History Task 1 Yr 8 Science It's Not Easy Being Green Test



Week 8 Cont.....

Friday 20th March

Yr 7 Maths Class Task
Whole School Conference
11SAC, Research Task
Yr 8F4 Listening and Reading Tasks
Yr 9 STEM Design Solution 1/ Folio
Yr 10 Timber, Research Task
Yr 10 Electronics; Research Task
Yr 10 STEM; 3D Bridge/Folio
Yr 12 Timber and Multimedia; Project Development
and Management

Saturday 21st March

Yr 12 Engineering: Transport Engineering Report
Whole School Conference
Castle Hill Show

FROM THE MATHEMATICS FACULTY

From The Faculty That Counts!

Congratulations to the following Maths Faculty Merit recipients:

Year 9

Aarnav S

Maths Faculty News for Term 1 Week 6:

Year 7 World of Maths Incursion

We are looking forward to the 'World of Maths' incursion on Monday 6th April. Notes will be given to all Year 7 classes shortly.

This incursion is a compulsory part of the Year 7 Mathematics working mathematically curriculum and all Year 7 students are required to attend. The students will work in small groups and participate in hands-on activities that require them use their Mathematics knowledge and higher order thinking skills.

In Touch Evening Years 7 & 11

It was great to talk with Year 7 and 11 parents at the 'In Touch' and 'In Contact' evenings in the last few weeks. These events give parents and students opportunities to meet with teachers and to get information and advice about their courses.

Textbooks:

All students are required to have their own Mathematics textbooks this year. The links are below for all years:

Year 7: <http://fivesenseseducation.com.au/model-farms-year-7-2020>

Year 8: <http://fivesenseseducation.com.au/model-farms-year-8-2020>

Year 9: <http://fivesenseseducation.com.au/model-farms-year-9-2020>

Year 10: <http://fivesenseseducation.com.au/model-farms-year-10-2020>

Year 11: <http://fivesenseseducation.com.au/model-farms-year-11-2020>

Year 12: <http://fivesenseseducation.com.au/model-farms-year-12-2020>

Other equipment students must bring to every lesson:

All students (except Years 10 & 12) are expected to have their own laptop/device.

All students are expected to have their own Casio Scientific Calculator



Calculators:

Please make sure that all students have their own calculator. The Casio fx-82AU or fx-100AU is sold at the uniform shop. Students need this calculator from Year 7. It is vital for their progress that students are familiar with their calculator and know how to use the different functions.

Mangahigh & Mathspace

Manga High has been a great success already with the setting of engaging activities for students for their Mathematics homework. All junior students have now had tasks set for Mangahigh. We also thank Ms John for giving us access to Mathspace, which is another online resource that is proving useful in preparing our junior students for their first assessment tasks in the coming weeks.

Google Classrooms & Student Emails:

'Google Classroom' is an online tool used by teachers to upload important resources and send important messages to their classes. When a teacher uploads a message or resource to a class Google Classroom, an email is generated, so the student is aware that something new has been added.

Please encourage your child to check their emails regularly to ensure that they aren't missing an important message from their teacher.

There is also a free app that students can upload to their phone so that they get their 'Google Classroom' messages in a more direct way and they can access resources more easily when they aren't at school.

Assessments Term 1

Common Class tests for Year 7 – 10 this term:

Year 7 – Thursday 19th March

Year 8 – Thursday 19th March

Year 9 – Friday 6th March

Year 10 – Thursday 12th March

Year 11 Standard & Extension 1 – Class Task - week 10

Year 12 – Standard 1 – Extended modelling and problem-solving task – week 9

Year 12 – Standard 2, Advanced, Ext 1 & Ext 2 – Class Task - week 11

Have a mathematical week

Mrs Lumley

**Head Teacher Mathematics,
and the Maths Faculty Staff**

FROM THE SCIENCE AND AGRICULTURE FACULTY

SCIENCE AND AGRICULTURE

In 2020 the second ever cohort of Stage 6 Investigating Science started classes at MFHS. This course has been designed to assist students engage with scientific processes and apply those processes to investigating relevant personal, community and global scientific issues.

This Year 11 Investigating Science class travelled to Penrith Lakes on Monday 2nd March where students conducted a range of hands on, collaborative practical investigations to investigate the health of the ecosystem post mining. This will form part of their first depth study assessment task.



Students attentive and prepared for field work.



Students completing first hand investigations by performing field work

Science Group Mentors Program

This year we are trialling something a little different for Science Group. We will be running a mentor program for older members who are looking to extend themselves and engage further with Science.

The Science Group Mentors Program will be open to any student who has participated in Science Group for at least 1 year. The aim of the program is to give students the opportunity to be science communicators and build skills relating to communication, team work, problem solving and leadership.

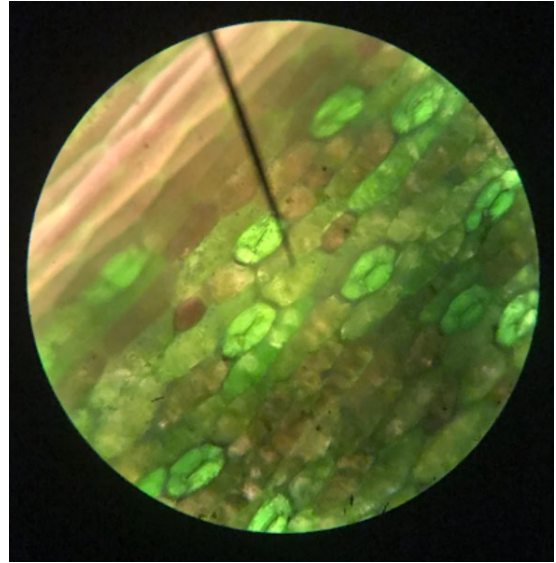
Mentors will have the opportunity to run demonstrations, lessons and stations for Year 7 members. They will also be assisting in programs such as Open Night and Primary Links (Science). Mentors will be shown how to conduct experiments, be taught the theory behind the science and given assistance wherever possible in order for them to develop the capabilities to be great science communicators.

At the conclusion of the year, mentors will be given a certificate along with the skills they have demonstrated in the program.

While we have already run an Introduction Session for the program, if you missed this and are interested in joining please see Ms Owen in Science.



Above: Photo of pollen sitting on the style of a hibiscus flower.
Taken by Kayla F



Above: Photo of the "pores" of a leaf (stomata and guard cells). Taken by Ethan C.

Half way through Term 1 of 2020

Year 10 have completed a Science skills test. They should be about halfway into their Major Science Investigation, due in week 11. Many students have proposed some fantastic ideas for experimentation while asking for approval from Ms Hoy.

In the last few years we had students building solar panels, juicing fruit, testing cosmetics, testing computer batteries... the list was endless! Hopefully Year 10 can come up with some great investigations, and all the Science Faculty look forward to seeing their results.

Year 9 have already completed one assessment task, which was a test in Scientific Skills.

Year 8 will have their first assessment test on week 8 on the topic "It's not easy being green". Notifications will be handed out week 6.

Year 7 are becoming proficient in using the Bunsen burner, different measuring devices and laboratory equipment. They are also writing out their first scientific reports and completing experiments. In week ten, Year 7 will have their first assessment called "Scientists in the Making" and Practical skills test. All the best year Seven.

From the Science Faculty

SPORT REPORT

SWIMMING

On Wednesday 26th February we had great student representation at the Hills Zone Swimming Carnival at Blacktown Aquatic Centre.

A huge congratulations to Celine V (12 years girls) Melica R (14 years girls), Zoe R (17+ years girls) and Jack M (17+ years boys) who were awarded Age Champions.



PE

Years 7 -10 PE are now completing the compulsory Cross-Country Unit during their PE classes.

The Model Farms Cross-Country team will be created based on students' results during their class runs. Any senior student who would like to represent Model Farms at the Zone Cross-Country Carnival, please give your names to Mrs Middleton and Ms Hawkins.

REPRESENTATIVE SPORT

Congratulations to the following students who have attained positions on representative teams:

Beatrice C (Volleyball)

Thomas J, Libby F (Softball)

Thomas J, Nathan M, Thomas W, Sam G, Jai S
(Baseball)

Chloe S, Akkarawat K, Nina M (Basketball)

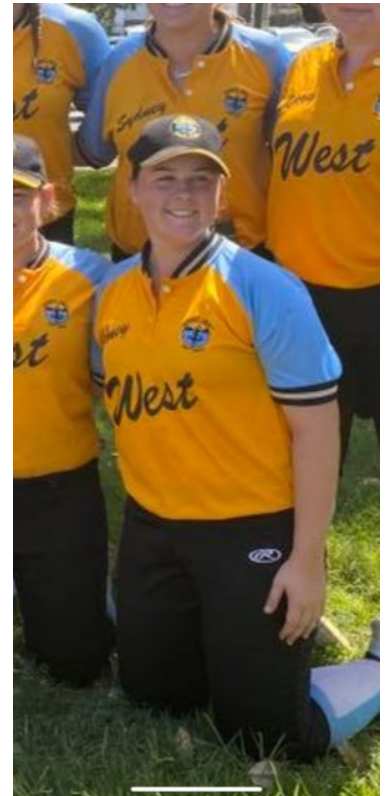
Samir A, Kade C, Iliya Z, Sam L (Rugby League)

Tyler C, Sam H, Nicholas B, Joshua S, Brodie F
(Soccer)

Esther H, Joshua R, Jared F, Kayla R (Hockey)

Ben H, Natalija I(Tennis)

A special congratulations to Libby F (ABOVE) who played on the Sydney West Softball team at CHS and placed 2nd!



STUDENT LEADERS

Congratulations to all our Year 11 House Captains and Year 12 Sports Leaders.

Chisholm: Ella B & Olivia B

Peel: Zoe E & Tiana S

Thompson: Kai L Q & Ben M

Wentworth: Deni B & Sean F

Sports Captains: Stephanie H & Cameron M

So far, all students are doing a great job.



(Olympic Swimmer James Magnussen with Model Farms Sport Captains Cameron M & Stephanie H, and Sport Co-ordinators C Middleton and E Hawkins)

TRIATHLON

Well done to R Christie (Year 7) who participated in the Individual event and Jack M, Ryan M and Ben M (year 11) who participated in the Team event at the All Schools Triathlon on the 26th and 27th of February. After catching up with the Year 11 Boys team we found out that the event involved a 400m swim, 15km bike ride and 3km run. The boys placed 17th overall and 8th out of participating Government schools. What a fantastic achievement!

Keep up to date with Sport by following on FB or online



**HILLS ZONE COMBINED
HIGH SCHOOLS SPORTS
ASSOCIATION**
SYDNEY, NEW SOUTH WALES, AUSTRALIA

Swimming carnival 2020

All houses competed in swimming and cheering at the swimming carnival on the 11th of February. The cheering was loud and definitely encouraged swimmers and made great viewing for race participants.

The winning house was Thompson, the Red House, and the Year 11 House Leader was ecstatic. *"It felt really good to win, our team tried their best and participated across a wide range, which I think is what matters the most"* said Ben.

The Year 7's enjoyed their swimming carnival in High School and many enjoyed success in the pool. The weather was nice and enjoyed by all, especially as rain was originally predicted.

There were many smiling faces, this was a very fun carnival. At the end of the day, Year 12 jump into the pool and have a play around in the water.

Tyler W



FROM THE ENGLISH FACULTY

As all our students gear up for their end of term assessment tasks, we wish to remind them that preparation is the key to success. Remember to work hard and manage your time effectively both in the classroom and at home. Your recent Elevate sessions empowered you all with you some extra advice and proven techniques on how to maximise your studying time at home. Creating a clean work space at home was identified as a great way to start.

Open Night on Tuesday 3rd March was fantastic; with excellence attendance in spite of the rainy weather. Thank you to our public speakers; Mabel and Annabel, as well as the wonderful drama performers for lending their impressive talents to our evening.



We are pleased to announce the commencement of Ms. Ayden's wonderful English initiative, *Fictitious Farmers*. Read on to learn about this exciting new group.



Annabel H (Left) and Mabel R (Right) gave our visitors performances of their public speaking and slam poetry.



Fictitious Farmers

A creative writing group has started up at Model Farms High School and meets every Monday during Lunch 2. Students use this time to work on personal projects and entries for creative writing competitions and are able to seek feedback from peers and teachers in an informal manner.

A few students are currently working on an entry to the Australian Young Writers' Creative Writing Competition on the topic of mental health. Entries close July 31; so, plenty of time to workshop!

Attached are two pieces written this week by students.

Cruel Birds – Caitlin C Year 11

Birds are cruel.

They take and leave whenever they desire.

They eat at and around our picnic tables

Birds do as they wish and eat our food scraps

That we were forced to throw out because they pooped in our lunch.

A bird pooped on my hand and chicken.

What a vengeful waste

Superworld – Rome V Year 8

SMALLVILLE HIGH SCHOOL
CITY/TOWN OF: SMALLVILLE
COUNTRY: AMERICA
PLANET: EARTH
OTHER NOTES: NONE

Clark Kent, the adopted son of Martha and Jonathan Kent, walked through the hall as his friend Pete Ross blabbered on next to him.

Kids swarmed out of classrooms and Clark slipped on the wet floor and caused the janitor to fall.

"Janitor Rudy. I'm so sorry." Clark apologised.

Janitor Rudolph Jones didn't forgive people easily. He had a serious overbite and a stubble beard. His light brown hair was almost always obscured by a green tattered baseball cap.

"Don't you kids read the wet floor sign? I can't wait when I leave and you'll be the janitors while I'll be rolling in dough." Grumbled Janitor Rudy.

"I'm sure you will, Janitor Rudy." Clark smiled and walked off with Pete.

"Dude, don't mess with him. Everyone knows he's old and mean and you'll be stuck with him until he dies." Pete whispered to Clark.

"I don't blame him for hoping. One day I hope I can be something a little more." Soon enough, the students of Smallville high gathered for an assembly hosted by Principle Kwan.

"So, I'm sure a lot of you have heard, the school has been blessed with the opportunity to use Smallville's signature meteors in school experiments." Principle Kwan explained.

People started to murmur and shout in the crowd.

"Don't worry they're not dangerous." Laughed the principal. "The big news is we have received funding from LuthorCorp themselves."

The murmuring got louder.

"And we have a special guest straight from Metropolis. Meet the famous Alexander Luthor."

A man walked out the curtain with flaming red hair and pale skin. He wore a suit and black sunglasses. He took off his sunglasses revealing his blank expression and green eyes.

There was a collection of cheers, boos, whistles and insults. Clark kept his head down as Pete booed angrily.

"Hey, I'm Lex Luthor." Said Lex, with a fake smile. "I'll be funding your school. I find these meteors fascinating. It's one of the biggest meteor showers of all and it's made of a substance not known to man."

"Now Mr. Luthor--"

"I don't mean to be rude, Principal Kwan, but you're interrupting me. Extraterrestrial material can be dangerous. I want to know more about it." The murmuring got louder once more.

"Thank you." Lex left.

Pete nudged Clark's shoulder.

"Luthor wants to exploit alien material. You heard him yourself, Clark."

Clark put his hand on his jet-black hair. "I don't know, Pete. Whatever the case, I hope these rocks aren't dangerous."

Lex walked across the halls before Janitor Rudy put his hand on Lex's shoulder. "Get your hands off me." Said Lex, not making eye contact with the janitor. He put his sunglasses back on and continued walking, never facing Rudy.

Rudy kept following Lex. "Mr. Luthor. Pleasure to meet you. Rudy Jones--"

"Skip the formalities. Get to the point. I'm a busy man, Mr. Jones."

Rudy struggled to keep up with Lex as he opened the doors and began walking towards the parking lot.

"I'd like to request a job. An investment advisor. I'd advise your...well, your investments."

Lex got in his car and slammed the door shut. "No thanks, Rudy. I'm not interested."

Then the car drove off as Rudy screamed angrily.



UNIFORM SHOP



Trading Days and Hours

Monday, Wednesday and Friday
8.10 am until 9.00 am

Payment Options

Cash - Eftpos - Visa - Mastercard - Qkr

~~~~~.

# **UNIFORM SHOP** **INFORMATION**

The Uniform Shop is run by the P&C Association and therefore separate from the school. All payments in relation to uniforms, book packs and any uniform related matters are required to be made directly to the Uniform Shop, NOT the school office.

Payments using the Parent Online Payment (POP) service are NOT permitted and CANNOT be used for Uniform Shop purchases at any time.

If you wish to pay on-line please register and use the QKR application.  
Students will still need to collect items from the Uniform Shop.

The Uniform Shop is conveniently open so that Students can try on and purchase their requirements themselves. It is important to note that our uniform items are not standard sizes and need to be tried on.  
Please note that phone orders are not accepted.

The Uniform Shop is open Monday, Wednesday and Friday mornings from 8.10 until 9.00 am. The accepted forms of payment are cash and eftpos transactions and on-line via the QKR app.

If your child is running late and needs items relative to the Uniform Shop please advise them to still come to the shop.  
There are measures in place to deal with this situation and they will not be marked as late or absent.

Thank You

# MODEL FARMS HIGH SCHOOL

## UNIFORM PRICE LIST

### TRADING DAYS and HOURS

Monday, Wednesday and Friday  
8.10 am until 9.00 am

### PAYMENT OPTIONS

Cash - Eftpos - Visa - Mastercard

| <b>ITEM</b>                                                               | <b>PRICE</b> |
|---------------------------------------------------------------------------|--------------|
| <b>BOYS</b>                                                               |              |
| Shirt - Blue                                                              | \$35         |
| Shorts - Grey                                                             | \$35         |
| Long Trousers                                                             | \$45         |
| <b>GIRLS</b>                                                              |              |
| Blouse - Blue - Old Style - Limited Sizes                                 | \$5          |
| Blouse - Blue - New Style                                                 | \$40         |
| Skirt - Check                                                             | \$65         |
| Long Pants                                                                | \$40         |
| <b>JUMPERS</b>                                                            |              |
| Fleecy                                                                    | \$45         |
| Wool - (Australian Wool)                                                  | \$85         |
| <b>SPORT</b>                                                              |              |
| Top                                                                       | \$40         |
| Shorts                                                                    | \$35         |
| <b>TRACKSUIT (BY ORDER ONLY)</b><br>Final Orders Close - 12 FEBRUARY 2020 |              |
| Jacket Only - Old Style - Very Limited Stock                              | \$40         |
| Jacket Only - New Style - Order Only                                      | \$75         |
| Pants Only                                                                | \$50         |
| Complete Set                                                              | \$120        |
| <b>MISCELLANEOUS</b>                                                      |              |
| Apron (Compulsory for Cooking)                                            | \$15         |
| Calculator (Compulsory)                                                   | \$35         |
| Exercise Books - ie. maths, music, normal                                 | \$various    |

2019/2020 - Prices subject to change without notice – includes 10% GST

**SPORT BUS PASSES CAN NOT BE PURCHASED ON WEDNESDAYS**

Please indicate preferred pass:

- A 5 trip pass for \$37.50      No. of passes \_\_\_\_\_      Total \$ \_\_\_\_\_
- A 10 trip pass for \$75.00      No. of passes \_\_\_\_\_      Total \$ \_\_\_\_\_

Name of Student/s \_\_\_\_\_ Year/s \_\_\_\_\_

Payment by:      CASH            CHEQUE

**CHANGE OF CONTACT INFORMATION**

**MODEL FARMS HIGH SCHOOL**

**Name of Student:** \_\_\_\_\_ **Year** \_\_\_\_\_

**New Address:** \_\_\_\_\_

\_\_\_\_\_ **Postcode:** \_\_\_\_\_

**Correspondence:** \_\_\_\_\_

\_\_\_\_\_ **Postcode:** \_\_\_\_\_

**Email Address:** \_\_\_\_\_

**New Home Phone No.** \_\_\_\_\_

**Mother Mobile:** \_\_\_\_\_

**Mother Work:** \_\_\_\_\_

**Father Mobile:** \_\_\_\_\_

**Father Work** \_\_\_\_\_

**Emergency Contact if changed:** \_\_\_\_\_

**Phone No.** \_\_\_\_\_

**Any change in Medical Condition e.g. Allergy, Asthma etc.**

**Details** \_\_\_\_\_

**Bus Pass:** YES / NO



## MODEL FARMS HIGH SCHOOL

*"Achieving Personal Excellence Through Quality Teaching"*

Dear Parent or Carer

During May 2020, students at our school in Years 7 and 9 will sit the NAPLAN paper assessments. The schedule for tests is as follows:

- Tuesday 12 May - Language Conventions Test and Writing Test
- Wednesday 13 May - Reading Test
- Thursday 14 May - Numeracy Test

**On Friday 15 May**, a 'catch-up' day is scheduled for students who missed a test.

Students may be exempt from the NAPLAN tests if they:

- are newly arrived in Australia (less than one year before the test) and with a language background other than English, **or**
- have significant intellectual disability and/or significant co-existing conditions which severely limit their capacity to participate in the tests.

All other students are expected to participate in the tests.

Disability adjustments which reflect the student's normal level of support in the classroom may be provided. Large print, braille, coloured paper versions and electronic tests are also available to meet the needs of individual students. Access to disability adjustments or exemption from the tests must be discussed with the school principal and a parent or carer consent form must be signed.

Students may be withdrawn from NAPLAN by their parent or carer after consultation with the school principal. To withdraw your child from NAPLAN, a parent or carer consent form must be signed. Please contact the school if you need to discuss your child's participation in NAPLAN.

Any questions concerning NAPLAN please contact the NAPLAN team on 1300 119 556 or [naplan.nsw@nesa.nsw.edu.au](mailto:naplan.nsw@nesa.nsw.edu.au). For further information about NAPLAN, visit the **NESA website**.

Regards,

Mark Grady  
Principal

**TAEKWONDO  
WORLD**

**Martial Arts  
for Kids**



**Free  
Uniform &  
2 weeks**



**5 Gladstone Rd,  
Castle Hill**

**8850 7771**

# Guitar Lessons

Learn guitar from an  
accredited & experienced  
guitar teacher.

- Acoustic or Electric
- All styles taught
- Beginner to Advanced

Call Owain today on

**0433 548 772**

Available 7 days